



## E-MAIL CONTINUITY

The e-mail continuity service effectively protects your e-mail system against failure.

Suddenly the e-mail system fails and e-mail cannot be received or sent. The continuity service is the stand-by contingency system for such an emergency. The solution runs in the background and keeps your e-mail traffic flowing in case of a failure.

### HIGH-AVAILABILITY E-MAIL TRAFFIC

Power failures, hard disc crashes or loss of network connectivity – there are many reasons why e-mail traffic can fail. Having alternative solutions that take over in case of emergency is important so no e-mails are lost and employees can continue to send and receive messages.

### COMPLIANCE, TRANSPARENCY & CONTROL

Maintaining an overview at all times is paramount, especially when it comes to e-mail traffic. A high degree of transparency in the incoming and outgoing message flow is an enormous help here. Compliance with data protection requirements should not be overlooked here either.

### EASY ADMINISTRATION

The continuous availability of e-mail traffic can be set up in seconds with additional services like the Skyfillers continuity service. Separate administration is basically unnecessary since the service takes over automatically if the e-mail infrastructure should fail.

### EASY TO USE

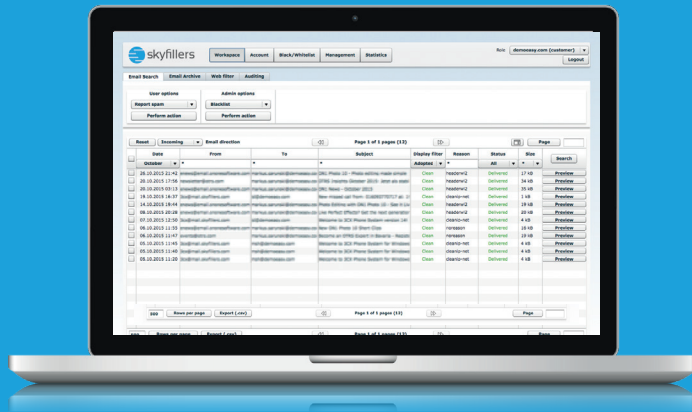
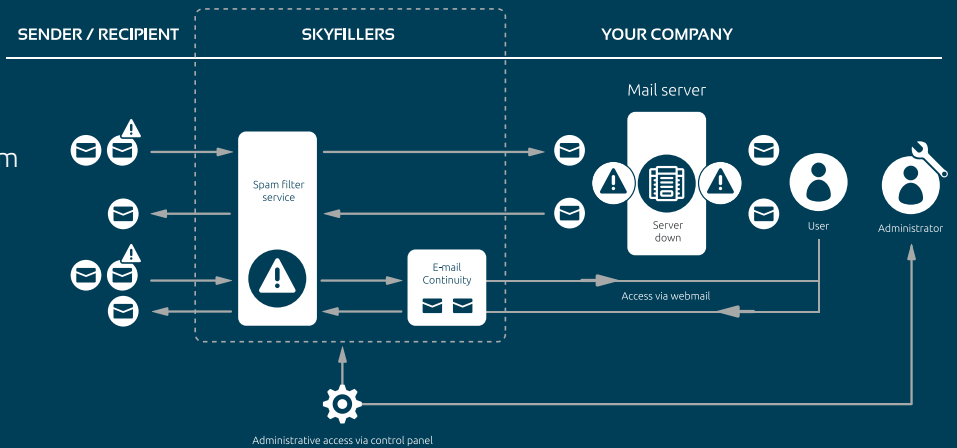
In case the e-mail server infrastructure fails, you want employees to continue working without interruption. Corresponding ease of use of the alternatives is therefore essential. The Skyfillers continuity service provides users with corresponding features.

#### Our cloud benefits at a glance

- + Complete access to all e-mails sent and received for a period of three months to ten years (with managed e-mail archive service)
- + Data protection even in the event the entire company IT is lost, for example due to fire, theft or incorrect configuration
- + Guaranteed e-mail continuity ensured by at least three high-availability data centres around the clock: 24/7/365
- + Personal support with no call centre
- + No hardware and software costs

## Continuous access to e-mails

If the company's proprietary e-mail system fails, users can process, send and receive their e-mails over a webmail interface instead. The folders provide access to all e-mail traffic.



## Skyfillers control panel

The control panel provides users and administrators with an overview of all of their e-mail traffic, particularly during an outage on the proprietary e-mail infrastructure. The full-text search function helps users search for e-mails, which can then be sent, classified as spam or assigned to a blacklist or whitelist.

## Continuity service features

Immediate activation via automatic routine, web or telephone

Full restoration of all e-mails sent and received during the failure

Access to stored e-mails via Outlook plugin

POP3 mailbox if the own mail server fails

Webmailer as alternative e-mail front end

Comprehensive search function: Either as full text search or according to certain criteria (date, sender, recipient, subject, attachments and so on)

Individual selection of users possible

## Benefits

Switching to the e-mail continuity service in seconds means no lost time or disruption of the communication channel.

No loss of possibly mission-critical messages.

Access to saved e-mails even during downtime of the own mail server, directly from Outlook.

All e-mails are available even when the internal e-mail infrastructure fails. Access to POP3 mailbox through e-mail client.

Guaranteed high availability of all e-mails.

Easy, precise and fast search feature to find the desired data quickly.

Failsafe e-mail communication can be guaranteed for the most important users in a company.